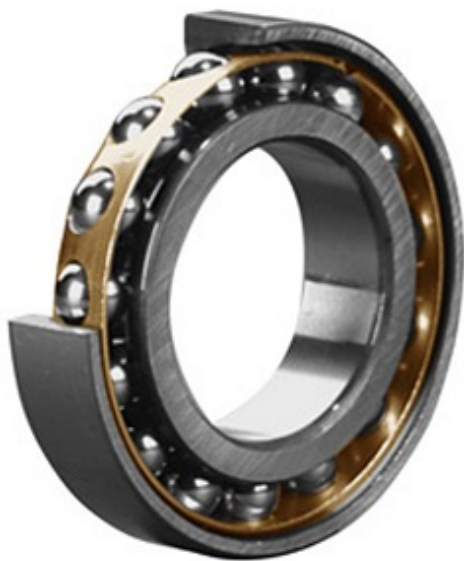




Bearing Brasil Ltda.



50 mm x 110 mm x 27 mm SKF QJ 310 MA Angular Contact Ball Bearings

Bearing No. QJ 310 MA

QJ 310 MA Bearing 2D drawings and 3D CAD models

Category	Angular Contact Ball Bearings
Inventory	0.0
Manufacturer Name	SKF
Minimum Buy Quantity	N/A
Weight	1.37
EAN	7316577036445
Product Group	B00308
Enclosure	Open
Flush Ground	No
Rolling Element	Ball Bearing
Number of Rows of Balls	Single Row
Precision Class	ABEC 3 ISO P6
Maximum Capacity / Filling Slot	No
Snap Ring	No
Cage Material	Brass
Contact Angle	35 Degree 4 Point
Internal Clearance	C0-Medium
Number of Bearings	1 (Single)
Inch - Metric	Metric
Long Description	50MM Bore; 110MM Outside Diameter; 27MM Width; Open; No Flush Ground; Ball Bearing; Single Row of Balls; ABEC 3 ISO P6; No Filling Slot; No Snap Ring



Bearing Brasil Ltda.

Other Features	Split Inner Race
Category	Angular Contact Ball Bearing
UNSPSC	31171531
Harmonized Tariff Code	8482.10.50.28
Noun	Bearing
Keyword String	Angular Contact
Manufacturer URL	http://www.skf.com
Manufacturer Item Number	QJ 310 MA
Weight / LBS	3.016
D	4.331 Inch 110 Millimeter
B	1.063 Inch 27 Millimeter
d	1.969 Inch 50 Millimeter
inside diameter:	50 mm
precision rating:	ABEC 1 (ISO Class Normal)
outside diameter:	110 mm
cage material:	Brass
overall width:	27 mm
maximum rpm:	11000 RPM
internal clearance:	C0
finish/coating:	Uncoated
closure type:	Open
outer ring width:	27 mm
radial dynamic load capacity:	118 kN
fillet radius:	2 mm
radial static load capacity:	100 kN
series:	QJ
d	50 mm
D	110 mm
B	27 mm
d ₁	65 mm



Bearing Brasil Ltda.

D_1	90 mm
a	56 mm
$r_{1,2}$ min.	2 mm
d_a min.	61 mm
D_a max.	99 mm
r_a max.	2 mm
Basic dynamic load rating C	118 kN
Basic static load rating C_0	100 kN
Fatigue load limit P_u	4.25 kN
Limiting speed	11000 r/min
Calculation factor A	0.029
Calculation factor e	0.95
Calculation factor X	0.6
Calculation factor Y_0	0.58
Calculation factor Y_1	0.66
Calculation factor Y_2	1.07
Mass bearing	1.35 kg